

Gumus Su Villas / Cirakoglu Architects



© Cemal Emden

Architects: [Cirakoglu Architects](#)
Location: 48000 [Gümüşlük, Turkey](#)
Design Team: [Allsan Cirakoglu](#), [Ilgin Avci](#), [Deniz Yazici](#), [Asli Ingenc](#), [Digdem Angin](#)
Area: 389.0 sqm
Year: 2014
Photographs: [Cemal Emden](#)



Developer: [Demirden Design](#)
Project Date: 2013



20 MAR 2014

Featured Houses Selected Works
Cirakoglu Architects Gümüşlük Turkey



324

Like

36



14

+1

54

Pin it



Paris à petits prix

Locations de Vacances Airbnb



Réservez vite en ligne !

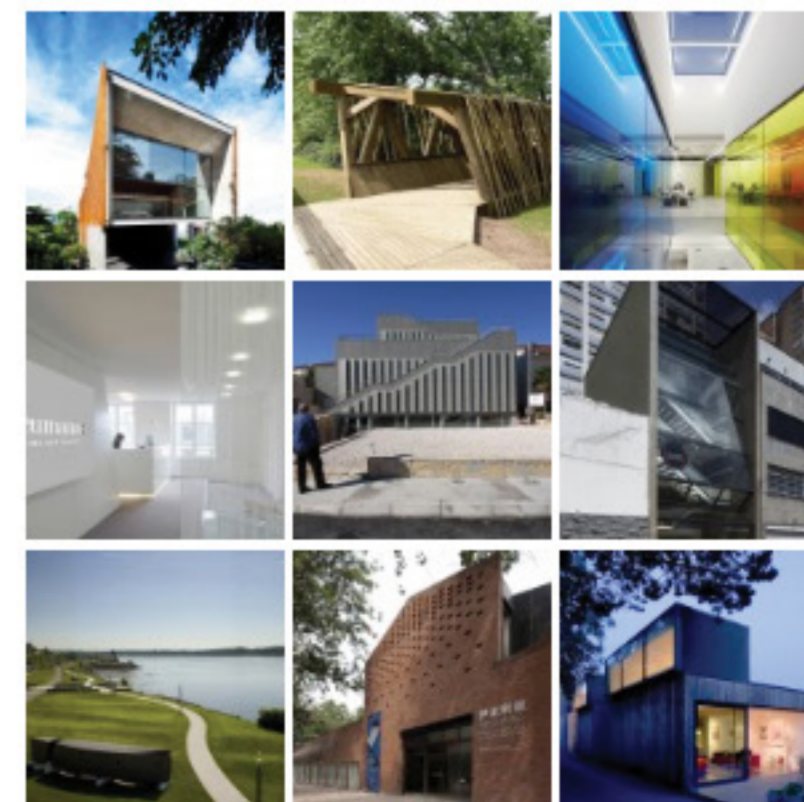


MORE OF CIRAKOGLU ARCHITECTS



10 Sep 2012
Gallium Block /
Cirakoglu Architects

SELECTED BUILDINGS



MORE PROJECTS >

20 MAR 2014

Featured Houses Selected Works
Cirakoglu Architects Gümüşlük
Turkey



© Cemal Emden

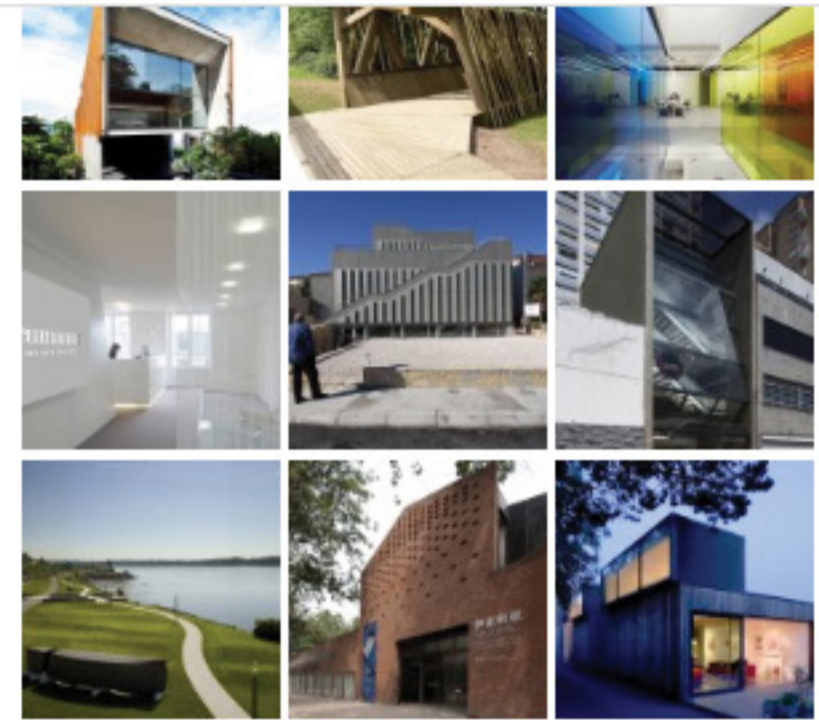
From the architect. Gumus Su Villas are located over the hills of Gümüşlük Village, Bodrum, a tranquil harbour with over the 4000 years of historical and cultural heritage.



© Cemal Emden

The urge to create a tranquil unity with the impressive nature formed the basis of our architectural approach.

The composition that came out of the process is an up-to-date interpretation that blends elements of the local architecture with a new language of design



MORE PROJECTS ▸

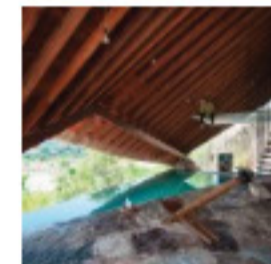
MOST VISITED OF THE WEEK



2 Jul 2014
Qatar Unveils Designs for Second World Cup Stadium



3 Jul 2014
App Review: Arrette Scale - Precision Scale Drawing



1 Jul 2014
The Tent / a21 studio



3 Jul 2014
The 10 Tallest Buildings Ever Demolished



16 Jun 2014
Four Ways to Learn About Architecture for Free





20 MAR 2014

Featured Houses Selected Works
Cirakoglu Architects Gümüşlük
Turkey



The location of the existing trees was one of the major consideration for the site layout.

The exceptional view of the sea and landscape also guided the layout decisions.



© Cemal Emden

Primary concern was to make use of traditional methods to provide energy efficiency. Thick stone walls and double walls provide sufficient thermal insulation. The bamboo shelter creates a secondary shading element in order to help to keep interiors cool. The semi open circulation areas lets the breeze into the living spaces



© Cemal Emden

Almost all materials are local and natural materials which are used in the surrounding traditional buildings.



20 MAR 2014
Featured Houses Selected Works
Cirakoglu Architects Gümüşlük
Turkey



elements of the local architecture with a new language of design



© Cemal Emden

The basic idea was to define the single house unit strictly within a square, repeat it five times within the site and then leave the rest of the site to the nature.

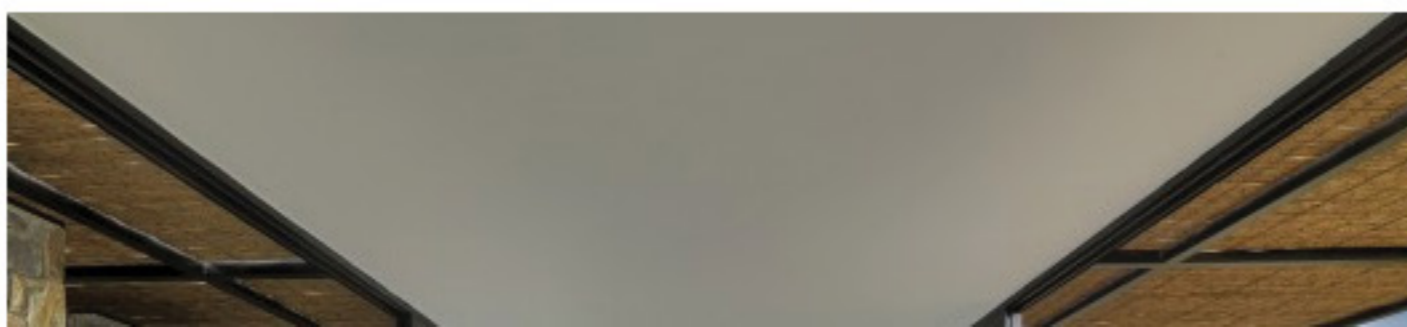
The rooms that make up a single unit are detached as individual blocks so as to create semi-open spaces in between



© Cemal Emden

The lounge, bedrooms, and bathrooms units that comprise each house are presented as blocks that are independent of each other.

The open spaces between these units are reminiscent of shady narrow back-streets that allow cooling breezes to pass through.



Free



The Best of
Healthcare